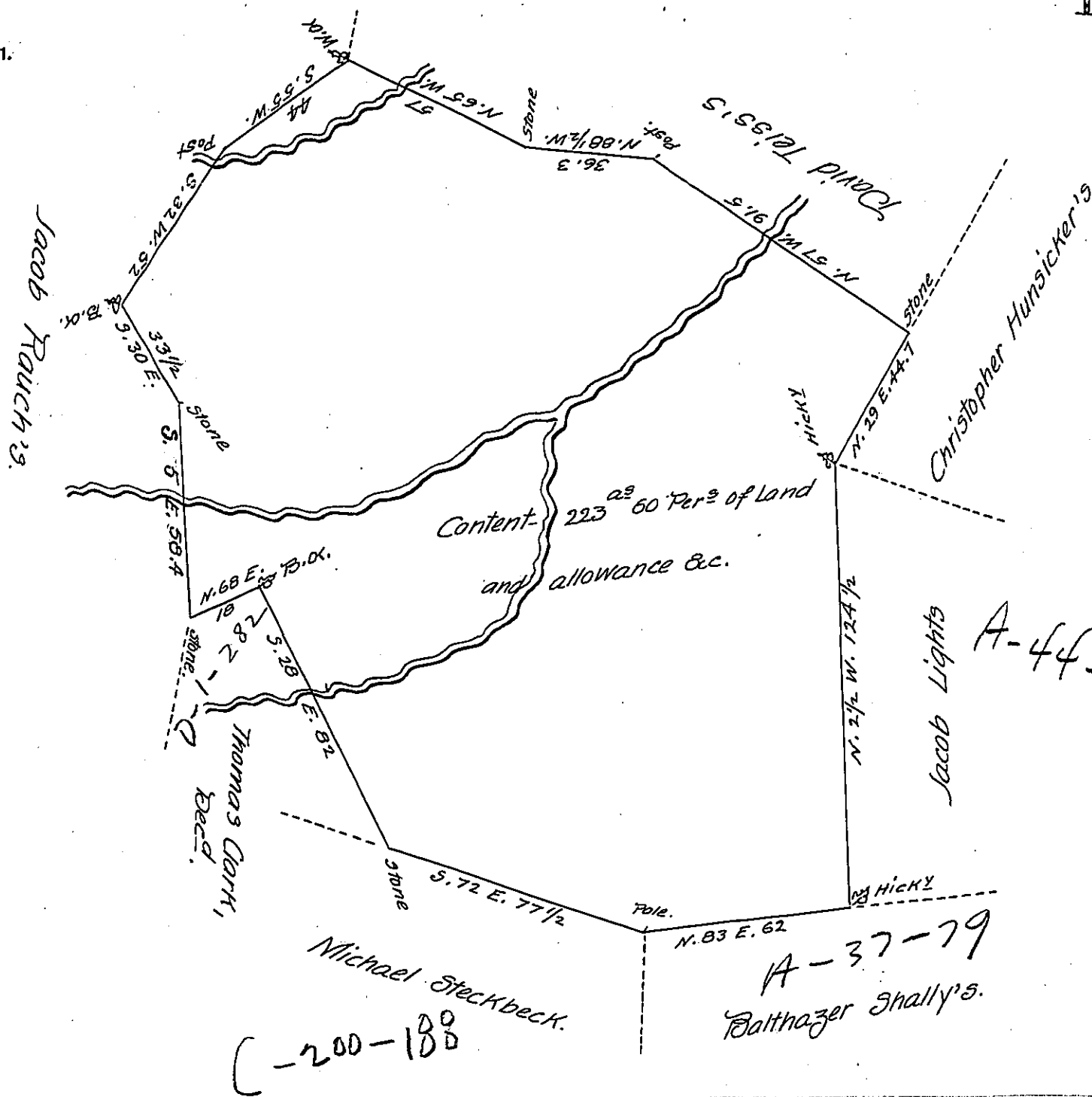


FORM NO 1.



A Draft of a Tract of Land situate in Swatara Township Ship Lebanon County containing two hundred & twenty three acres and sixty perches and the usual allowance of 6 & Ct. for Roads &c. It being the same Tract which was granted by Warrant unto Peter Wampler dated the 16<sup>th</sup> day of March 1749 contained about two hundred acres more or less, I do certify that the above is a true Calculation according to the courses & Distances, as it appears by the official Draft of John McHee formerly Dep<sup>y</sup> Survey<sup>r</sup> Sur<sup>v</sup>d on the 1<sup>st</sup> day of Feb<sup>y</sup> 1810.

Tobias Kreider, Jr.  
D. S.

To Gabriel Hiester, Esq.  
Surveyor Gen<sup>l</sup>.

IN TESTIMONY that the above is a copy of the original remaining on file in the Department of Internal Affairs of Pennsylvania, made conformably to an Act of Assembly approved the 16th day of February, 1833, I have hereunto set my Hand and caused the Seal of said Department to be affixed at Harrisburg, this fourth day of June 1907

*Henry Houch*  
Secretary of Internal Affairs.